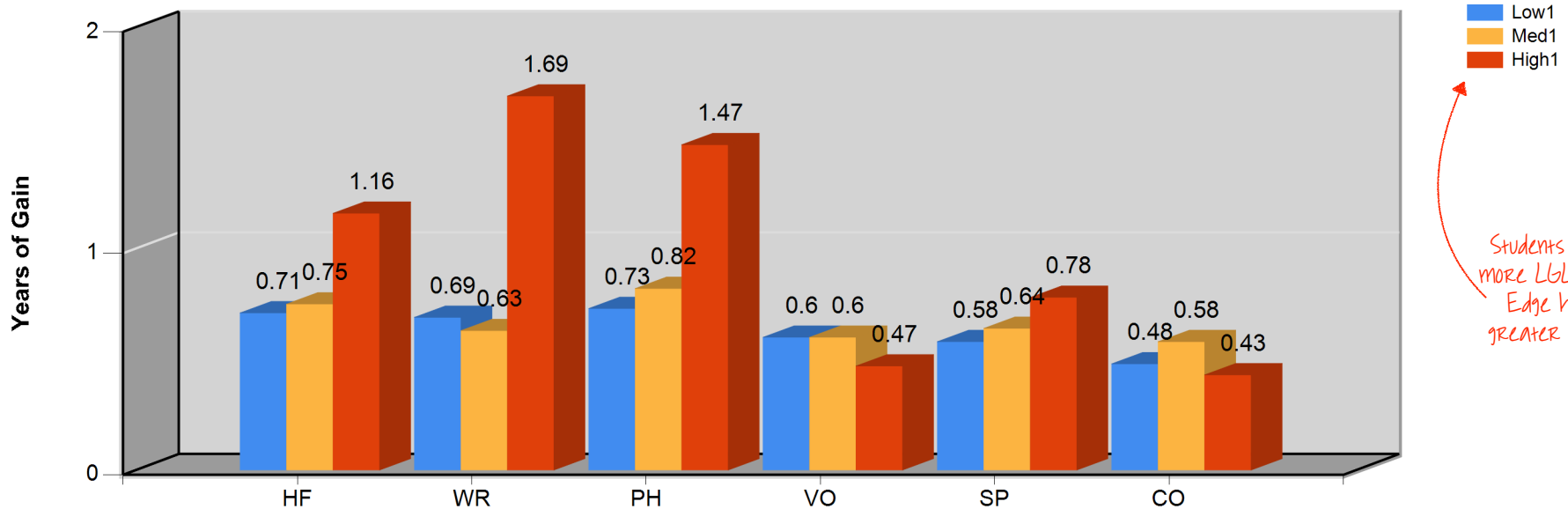


Reading Gains by LGL EDGE Usage



Category	High-Freq Words	Word Rec.	Phonics	Vocabulary	Spelling	Comprehension	Total Count
Low	0.71	0.69	0.73	0.59	0.58	0.48	483
Medium	0.75	0.63	0.82	0.60	0.64	0.58	106
High	1.16	1.69	1.47	0.47	0.78	0.43	17

At lower grade levels, high-frequency words (HF), word recognition (WR), and phonics (PH) are the sub-tests with the most gains.

Start Date: 8/15/2016

Grade: 1

Outlier Level: None

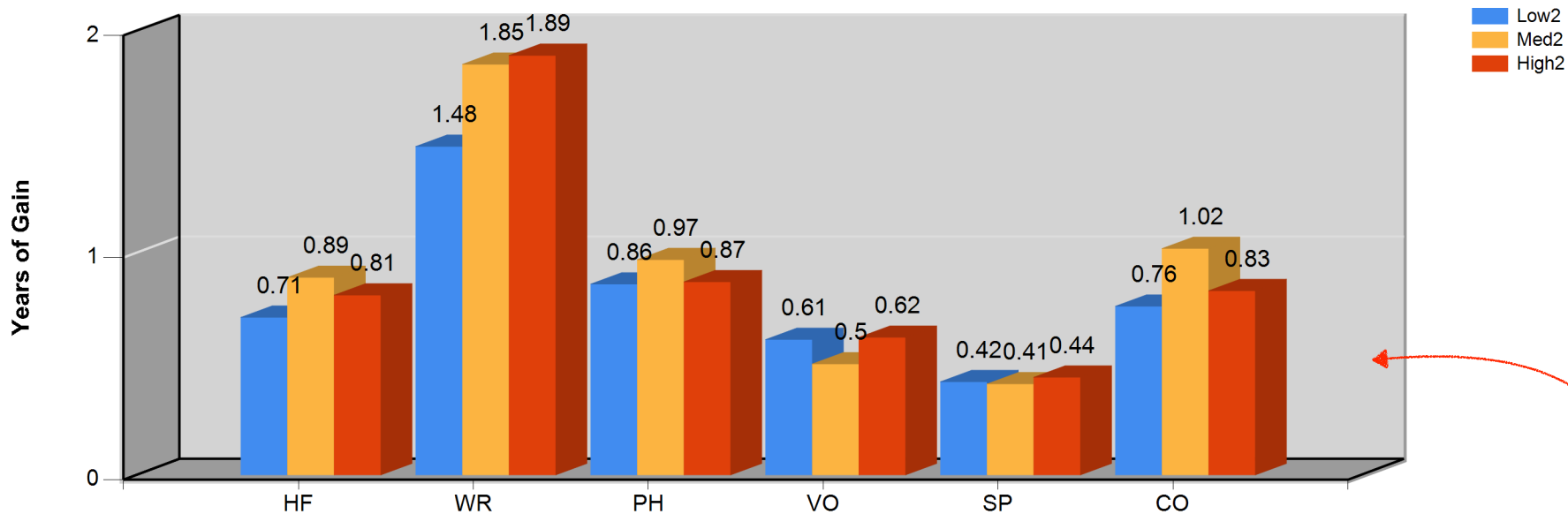
Start Date: 1/30/2017

Low: < .2 hours

Med: .2 to 3.6 hours

High: 3.6 + hours

Reading Gains by LGL EDGE Usage



We see consistently greater gains for the medium and high LGL ELA Edge use groups.

Category	High-Freq Words	Word Rec.	Phonics	Vocabulary	Spelling	Comprehension	Total Count
Low	0.71	1.48	0.86	0.62	0.43	0.76	466
Medium	0.89	1.85	0.97	0.50	0.41	1.02	104
High	0.81	1.89	0.87	0.62	0.44	0.83	39

Start Date: 8/15/2016

Grade: 2

Outlier Level: None

Start Date: 1/30/2017

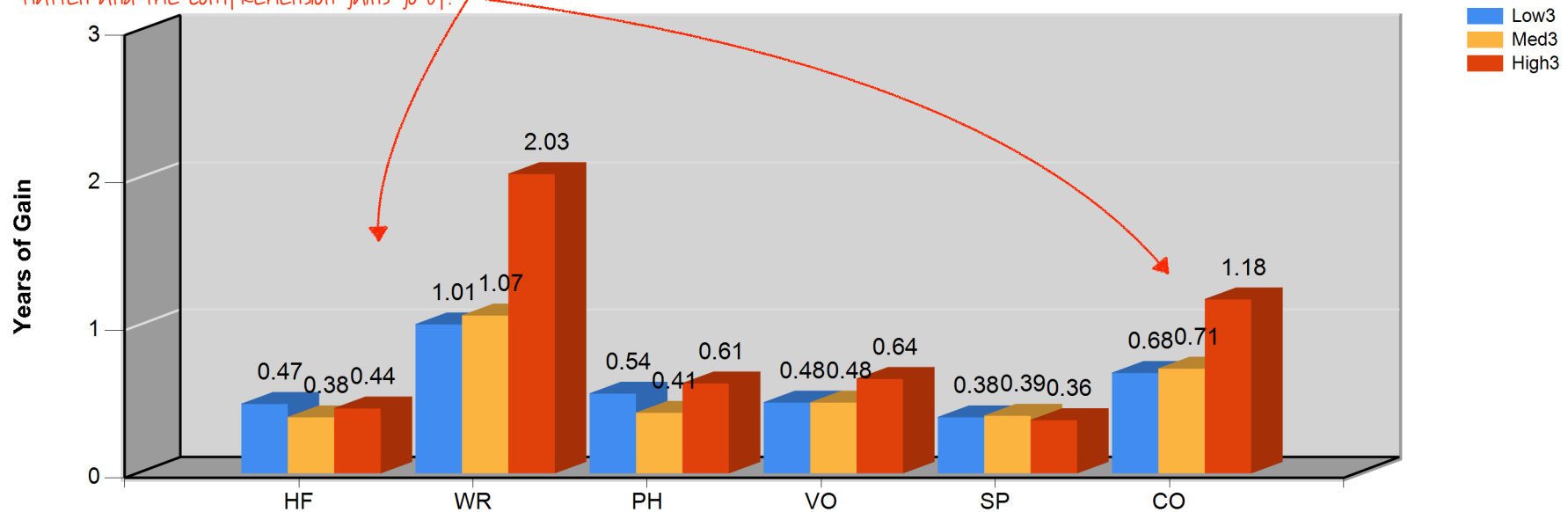
Low: < .2 hours

Med: .2 to 3.6 hours

High: 3.6 + hours

We see some shifts in third grade. As more and more students master decoding, the decoding gains flatten and the comprehension gains go up.

Reading Gains by LGL EDGE Usage



Category	High-Freq Words	Word Rec.	Phonics	Vocabulary	Spelling	Comprehension	Total Count
Low	0.47	1.00	0.54	0.48	0.38	0.67	400
Medium	0.38	1.07	0.41	0.48	0.39	0.71	109
High	0.44	2.03	0.61	0.64	0.36	1.13	68

Notice the significantly greater gains in Comprehension for the high usage group.

Start Date: 8/15/2016

Grade: 3

Outlier Level: None

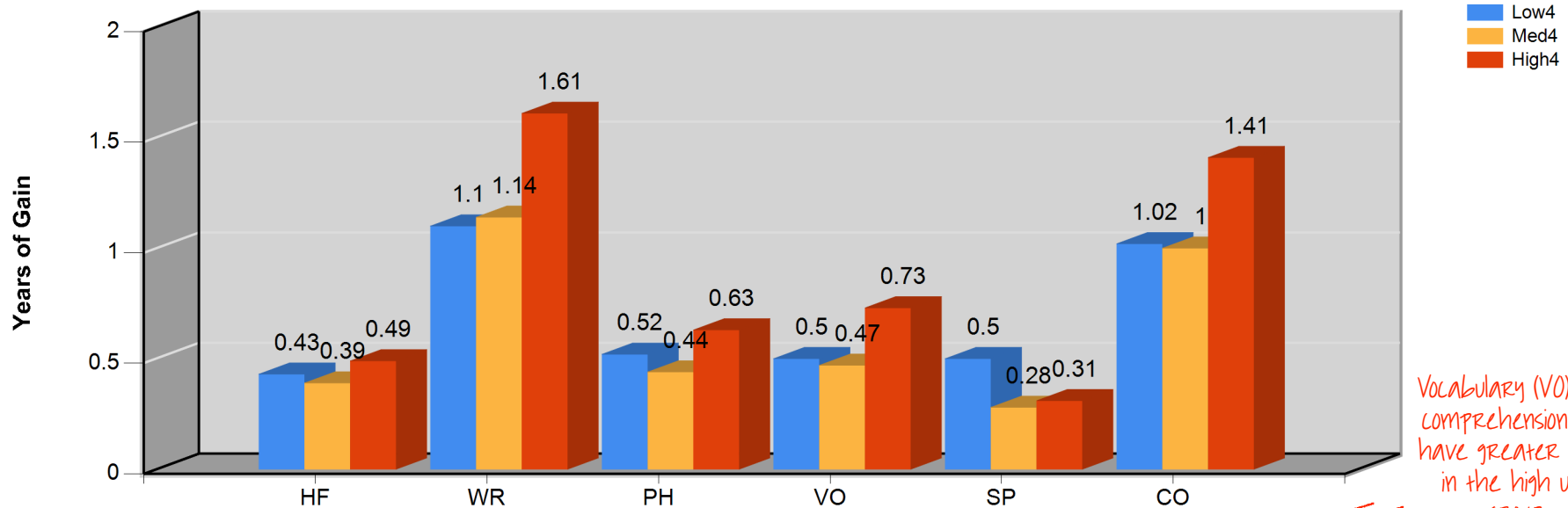
Start Date: 1/30/2017

Low: < .2 hours

Med: .2 to 3.6 hours

High: 3.6 + hours

Reading Gains by LGL EDGE Usage



Vocabulary (VO) and Comprehension (CO) have greater gains in the high use group.

Category	High-Freq Words	Word Rec.	Phonics	Vocabulary	Spelling	Comprehension	Total Count
Low	0.43	1.10	0.52	0.51	0.50	1.01	346
Medium	0.39	1.14	0.44	0.47	0.28	1.00	156
High	0.49	1.61	0.63	0.73	0.31	1.41	83

Start Date: 8/15/2016

Grade: 4

Outlier Level: None

Start Date: 1/30/2017

Low: < .2 hours

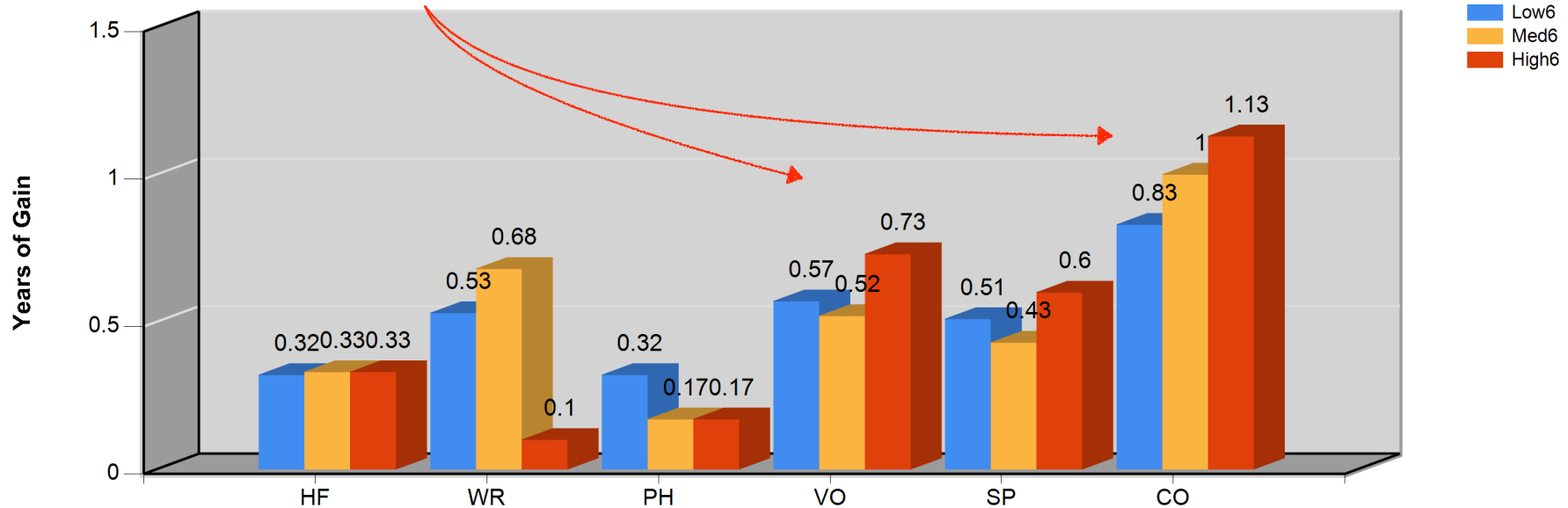
Med: .2 to 3.6 hours

High: 3.6 + hours

This site overall is below target for time on task. Thus, we only see gains as students use LGL ELA Edge for over 3.6 hours.

Unless we are examining a sub-group like ELL, by 6th grade, we would expect vocabulary (VO) and comprehension (CO) to have the greatest gains.

Reading Gains by LGL EDGE Usage



Category	High-Freq Words	Word Req.	Phonics	Vocabulary	Spelling	Comprehension	Total Count
Low	0.32	0.54	0.32	0.57	0.52	0.84	441
Medium	0.33	0.68	0.17	0.52	0.43	1.00	72
High	0.33	0.10	0.17	0.73	0.60	1.13	10

Start Date: 8/15/2016

Grade: 6

Outlier Level: None

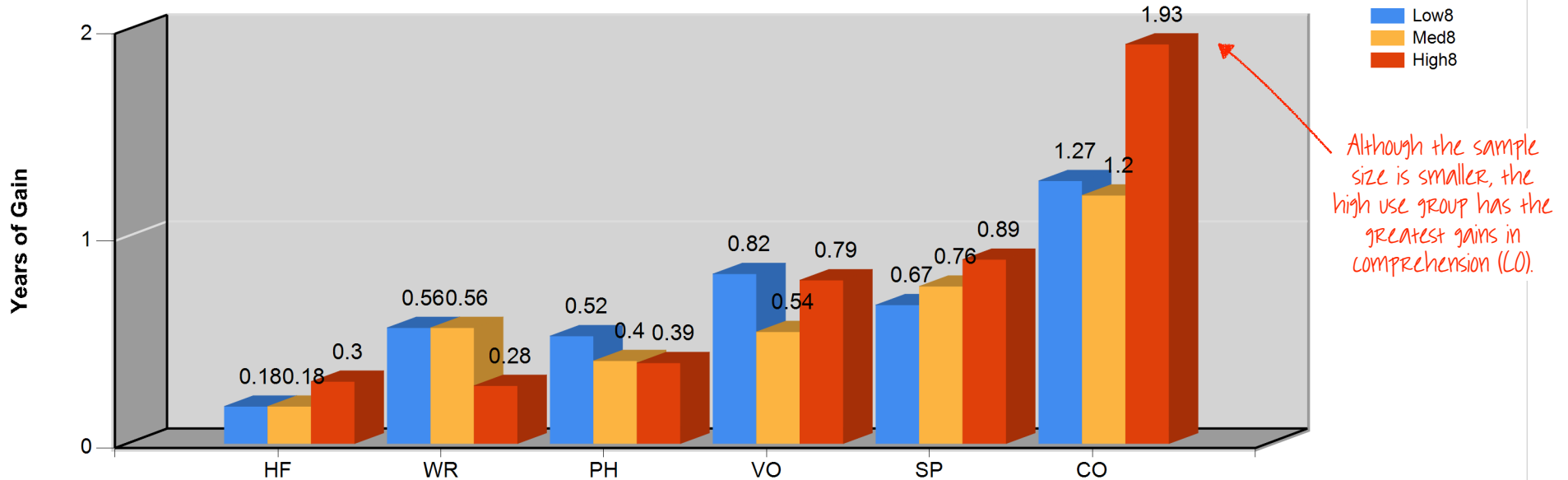
Start Date: 1/30/2017

Low: < .2 hours

Med: .2 to 3.6 hours

High: 3.6 + hours

Reading Gains by LGL EDGE Usage



Category	High-Freq Words	Word Rec.	Phonics	Vocabulary	Spelling	Comprehension	Total Count
Low	0.18	0.56	0.52	0.82	0.67	1.27	84
Medium	0.18	0.56	0.40	0.54	0.76	1.20	88
High	0.30	0.28	0.39	0.79	0.89	1.93	29

Start Date: 8/15/2016

Grade: 8

Outlier Level: None

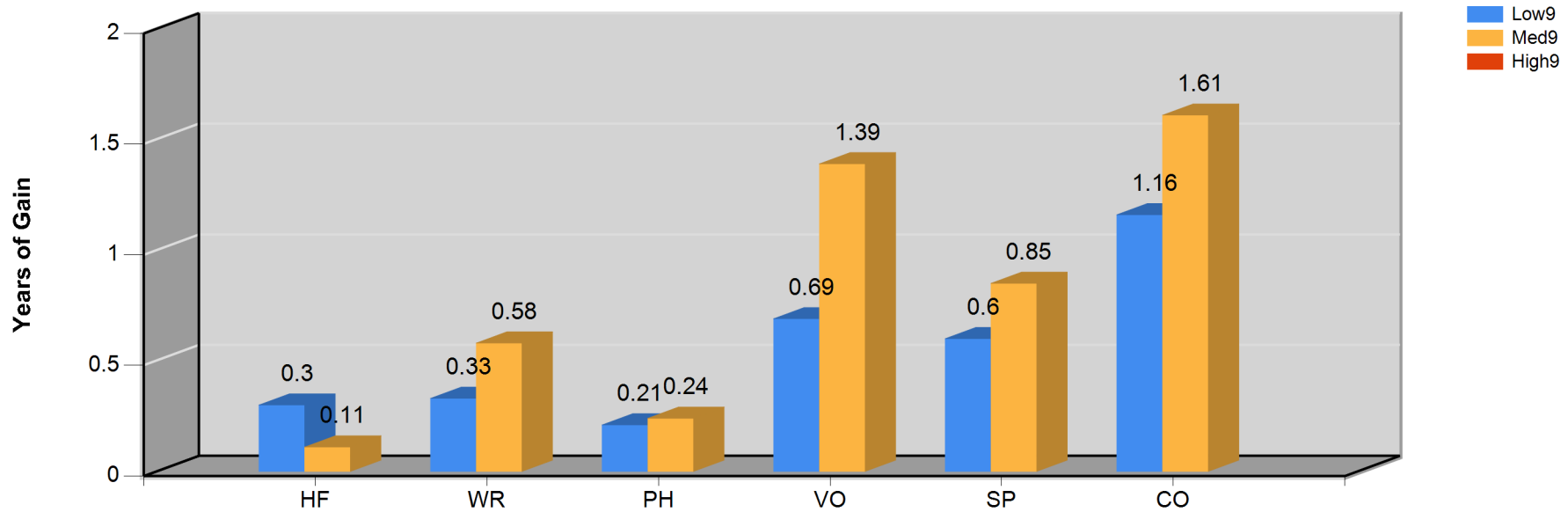
Start Date: 1/30/2017

Low: < .2 hours

Med: .2 to 3.6 hours

High: 3.6 + hours

Reading Gains by LGL EDGE Usage



Category	High-Freq Words	Word Rec.	Phonics	Vocabulary	Spelling	Comprehension	Total Count
Low	0.30	0.33	0.21	0.69	0.60	1.16	252
Medium	0.11	0.58	0.24	1.39	0.85	1.61	60
High	0.00	0.00	0.00	0.00	0.00	0.00	0

Start Date: 8/15/2016

Grade: 9

Outlier Level: None

Start Date: 1/30/2017

Low: < .2 hours

Med: .2 to 3.6 hours

High: 3.6 + hours